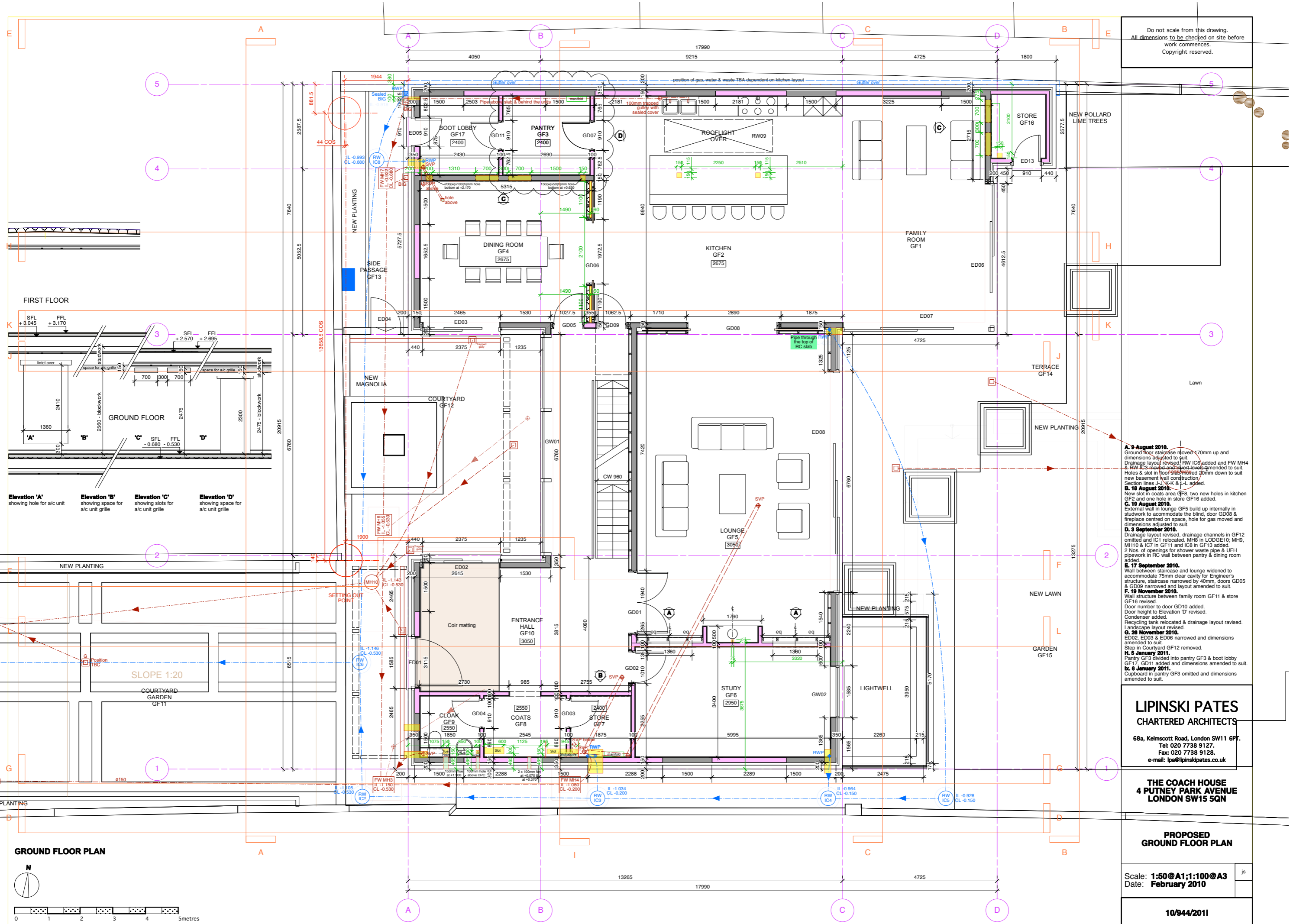


Do not scale from this drawing.  
All dimensions to be checked on site before work commences.  
Copyright reserved.



- A. 9 August 2010.**  
Ground floor staircase moved 170mm up and dimensions amended to suit.  
Drainage layout revised. RW IC6 added and FW MH4 & RW IC3 moved and invert levels amended to suit.  
Holes & slot in floor slab moved 20mm down to suit new basement wall construction.  
Section lines J-J, K-K & L-L added.
- B. 18 August 2010.**  
New slot in coats area GF8, two new holes in kitchen GF2 and one hole in store GF16 added.
- C. 19 August 2010.**  
External wall in lounge GF5 build up internally in studwork to accommodate the blind, door GD08 & fireplace centred on space, hole for gas moved and dimensions amended to suit.
- D. 3 September 2010.**  
Drainage layout revised, drainage channels in GF12 omitted and IC1 relocated. MH8 in LODGE10; MH9, MH10 & IC7 in GF11 and IC8 in GF13 added.  
2 Nos. of openings for shower waste pipe & UFH pipework in RC wall between pantry & dining room added.
- E. 17 September 2010.**  
Wall between staircase and lounge widened to accommodate 75mm clear cavity for Engineer's structure, staircase narrowed by 40mm, doors GD05 & GD09 narrowed and layout amended to suit.
- F. 18 November 2010.**  
Wall structure between family room GF11 & store GF16 revised.  
Door number to door GD10 added.  
Door height to Elevation 'D' revised.  
Condenser added.  
Recycling tank relocated & drainage layout revised.  
Landscape layout revised.
- G. 28 November 2010.**  
ED02, ED03 & ED06 narrowed and dimensions amended to suit.  
Step in Courtyard GF12 removed.
- H. 5 January 2011.**  
Pantry GF3 divided into pantry GF3 & boot lobby GF17. GD11 added and dimensions amended to suit.
- I. 6 January 2011.**  
Cupboard in pantry GF3 omitted and dimensions amended to suit.

**LIPINSKI PATES**  
CHARTERED ARCHITECTS  
68a, Keilmcott Road, London SW11 6PT.  
Tel: 020 7738 9127.  
Fax: 020 7738 9128.  
e-mail: lpe@lipinskিপates.co.uk

**THE COACH HOUSE**  
4 PUTNEY PARK AVENUE  
LONDON SW15 5QN

**PROPOSED**  
**GROUND FLOOR PLAN**

Scale: **1:50@A1;1:100@A3**  
Date: **February 2010**

**10/944/2011**

**GROUND FLOOR PLAN**

